


Erratum to: Genotypic and environmental variability of tocopherols and phytosterols in linseed (*Linum usitatissimum* L.) oil[☆]

OCL 2025, 32, 32 - <https://doi.org/10.1051/ocl/2025027>

Alicia Ayerdi Gotor¹, Florentin Donot², Brigitte Thomaset³, Thierry Aussenac⁴, Rachid Sabbahi⁵ and Larbi Rhazi^{4,*} 

¹ Institut Polytechnique UniLaSalle, AGHYLE, UP 2018.C101, 19 rue Pierre Waguët, BP 30313, 60026 Beauvais, France

² TINCTURA, 29260 Ploudaniel, France

³ Université Technologique de Compiègne, UMR CNRS 6022, BP 20529, 60205 Compiègne, France

⁴ Institut Polytechnique UniLaSalle, Université d'Artois, ULR 7519, 19 rue Pierre Waguët, BP 30313, 60026 Beauvais, France

⁵ Research Team in Science and Technology, Higher School of Technology, Ibn Zohr University, Quartier 25 Mars, P.O. Box 3007, Laayoune 70000, Morocco

Accepted 24 December 2025

About the article Gotor AA, Donot F, Thomaset B, Aussenac T, Sabbahi R, Rhazi L. 2025. Genotypic and environmental variability of tocopherols and phytosterols in linseed (*Linum usitatissimum* L.) oil. *OCL* 32: 32, published on 7 October 2025, Figures 2 and 3 were incorrect.

Please find down below the correct ones:

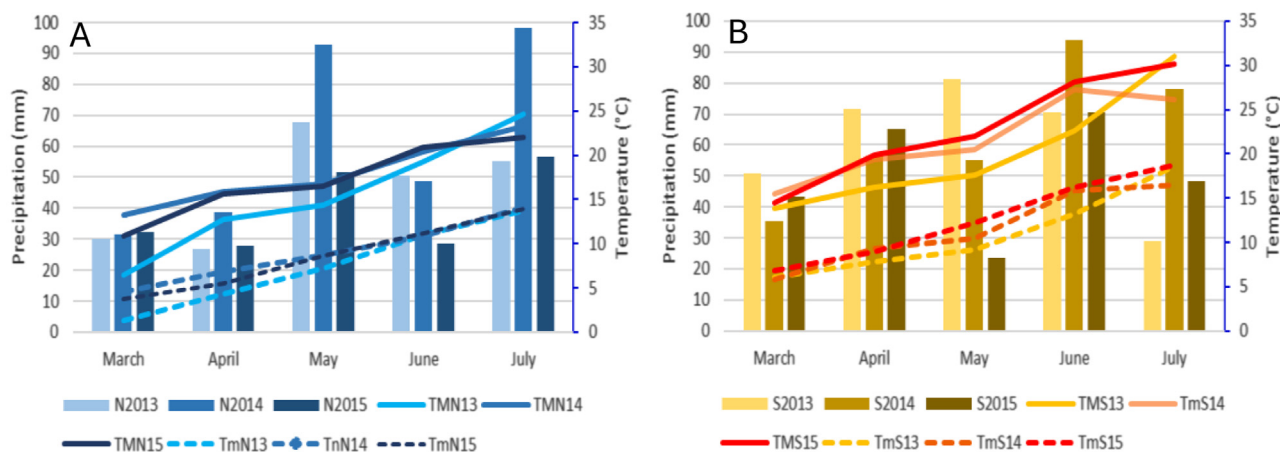


Fig 2. Meteorological data from trail sites in northern France (Airianes and Poix-de-Picardie; A, labelled N) and southern France (Lavaur; B, labelled S) during the 2013–2015 linseed growing seasons. Solid lines represent maximum temperatures (TM), and dotted lines denote minimum temperatures (Tm). Vertical bars indicate cumulative rainfall. Blue corresponds to northern France (2013–2015), and orange to southern France.

[☆] Contribution to the Topical Issue: “Minor oils from atypical plant sources / Huiles mineures de sources végétales atypiques”.

*Corresponding author: larbi.rhazi@unilasalle.fr

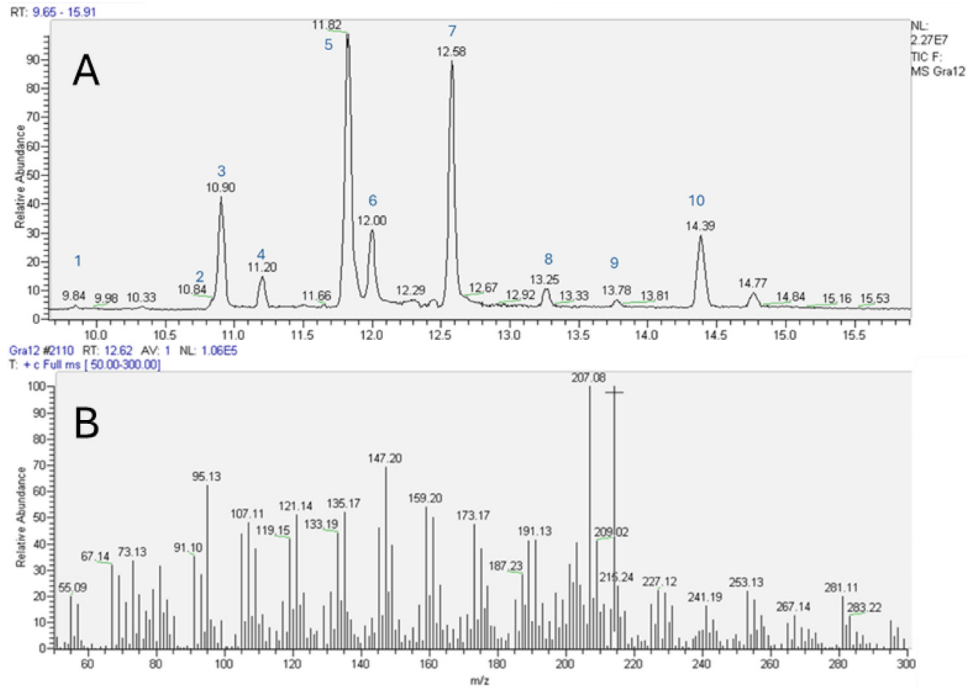


Fig 3. The upper figure (A) represents the GC chromatogram of silylated linseed oil sterols : 1: brassicasterol; 2: 24-methylene campesterol; 3: campesterol; 4: stigmasterol; 5: β -sitosterol; 6: Δ^5 -avenasterol; 7: cycloartenol; 8: Δ^7 -stigmasterol; 9: Δ^7 -avenasterol; and 10: betulin (internal standard); the B part mass spectrum of the cycloartenol at the retention time (RT) 12.58.

Cite this article as: Gotor A. A, Donot F, Thomaset B, Aussenac T, Sabbahi R, Larbi R. 2026. Erratum to: Genotypic and environmental variability of tocopherols and phytosterols in linseed (*Linum usitatissimum* L.) oil *OCL* 33: 5. <https://doi.org/10.1051/ocl/2025044>