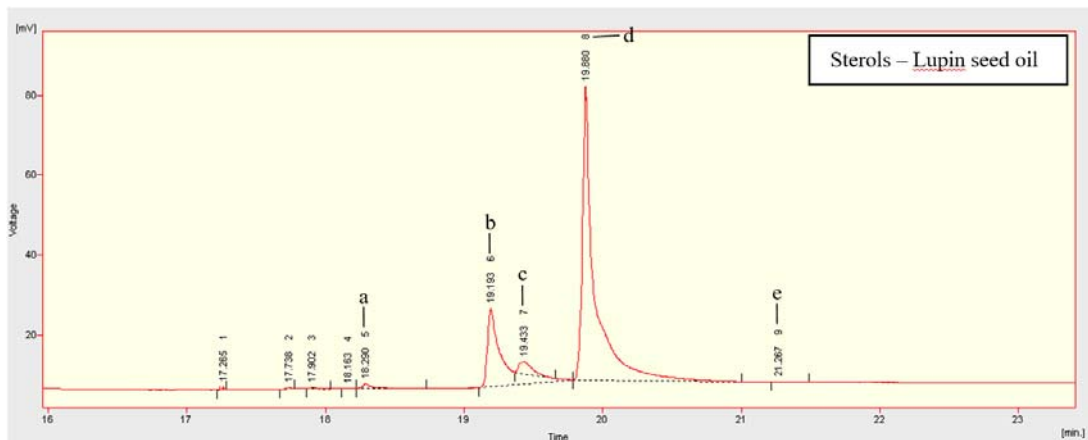


Supplementary material 1. Chromatogram of the fatty acid composition of phosphatidylethanolamine isolated from lupin seeds

- * - a – Caprylic; b – Lauric; c – Myristic; d – Pentadecanoic; e – Palmitic; f – Palmitoleic; g – Margaric; h – Heptadecenoic; i – Stearic; j – Oleic; k – Linoleic; l – Arachidic; m – Linolenic; n – Eicosadienoic



Supplementary material 2. Chromatogram of sterol composition of lupin seed oil

- * - a – Cholesterol; b – Campesterol; c – Stigmasterol; d – β -Sitosterol; e – Δ^7 - Stigmasterol